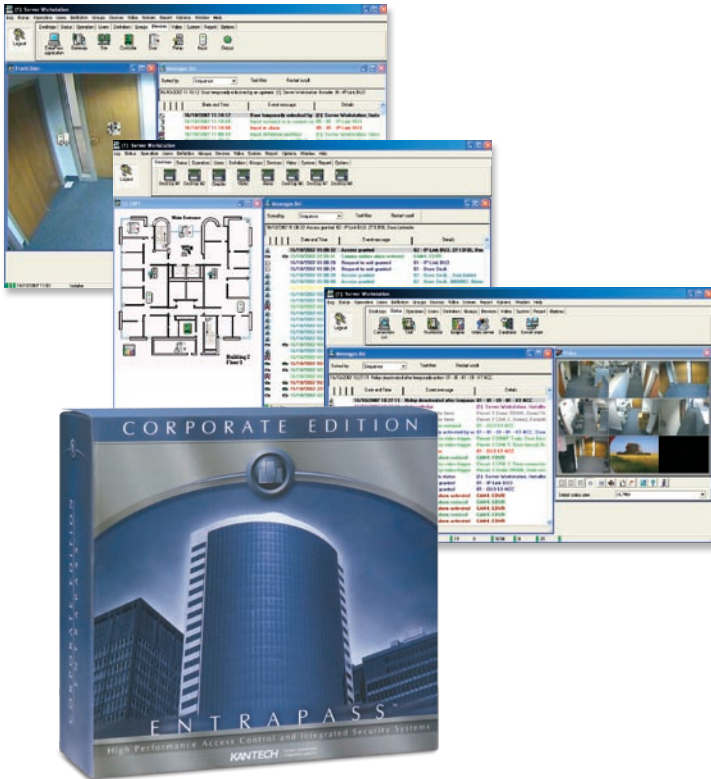


EntraPass Corporate Edition High Performance Access Control Solution

Features That Make a Difference:

- Supports up to 20 workstations and controls thousands of doors
- Operates securely over a network using either Kantech™ IP Link with KT-100 and KT-300 controllers or the Ethernet-ready KT-400 controller
- Create multiple cards per user for more efficient card management
- EntraPass workspaces let you control what operators can see based on user privileges
- Manage your system remotely with EntraPass WebStation
- Embed DVRs, IP cameras, web pages, or network files into EntraPass using WebViews
- Integrates with American Dynamics® Intellex® digital video management systems to display live video, play back recorded video, dispatch, log, and locally save recorded event video
- Eight operator-configurable desktops with unlimited interactive floor plans provide a highly customized experience for each workstation
- Interface with paging systems, HVAC systems, and more with innovative SmartLink feature
- Integrated badging solution
- Elevator control for up to 64 floors per elevator
- Supports remote management from central monitoring stations (Managed Access Control)
- Optional redundancy server and Card Gateway (Oracle/MS SQL HR interface) ensure that critical data is secure even in the event of communication failure



Kantech EntraPass Corporate Edition is a powerful, multi-user access control system that adapts easily to meet the needs of growing businesses, allowing you to manage one building or access multiple remote sites from a network.

EntraPass Corporate Edition is extremely easy to install. Express Setup automatically defines all the necessary system components which reduces the time required to configure the system and eliminates programming errors.

EntraPass Corporate Edition's distributed architecture supports connections to remote sites using direct connections, dial-up modems, and TCP/IP communication with KT-100, KT-200, and KT-300 controllers (with Corporate Gateway) using Kantech IP Link, or KT-400 Ethernet-ready four-door controller with an onboard Ethernet port. Both Kantech IP Link and KT-400

provide secure communication to the EntraPass system via 128-bit AES-encryption. All communication is sent over the network only when required, keeping network traffic down to a minimum.

EntraPass integrates with American Dynamics Intellex digital video management systems¹ and the American Dynamics EDVR digital video recorder.^{1, 2} This video integration dramatically increases security by allowing visual observations of monitored areas and allowing security personnel to link an access control event to a video clip directly from their access control application.

(1) Requires software v3.1 or higher for Intellex Ultra, DVMS, IP, v2.6 or higher for Intellex LT, and v1.54 for EDVR
 (2) EDVR is supported in LAN configuration. A free workstation license to operate and configure multiple EDVRs from a separate PC is provided on the EntraPass CD

features

Manage Access Control over the Network

EntraPass Corporate Edition supports Kantech IP Link, which provides a secure and affordable way to manage your access control system over a network using KT-100 and KT-300 door controllers. Kantech IP link manages polling of these door controllers and communicates with EntraPass Corporate Edition only when an event has occurred. This significantly reduces the amount of bandwidth required for your customers to manage their access control system over a network. Kantech IP Link uses 128-bit AES encryption to communicate with EntraPass to ensure secure communication when used over the Internet.

In addition, EntraPass supports the KT-400 Ethernet-ready four-door controller that provides 128-bit AES-encrypted communication with the EntraPass system. With an onboard Ethernet port, you do not need to purchase an external IP device to connect to the network.

Simplify and Improve System Management

EntraPass workspaces provide customized views of the EntraPass system based on an operator's access privileges. Each workspace is created and defined in terms of devices – gateways, sites, doors, relays, etc. – and is configured to identify what areas of the EntraPass system the operator can access and view, such as desktop display, card fields, etc. Workspaces enable you to create different views of the EntraPass system that can be saved and applied to any user.

This feature also lets an operator further create and refine his or her own views to filter additional components that are not necessary for day-to-day operation. The operator can create, save, and reuse temporary workspaces. This feature is useful whenever a recurring operation is needed on the system such as creating reports.

With EntraPass, you can assign up to five cards to any single employee to avoid having to create five different entries in EntraPass. Access levels can also be applied at this time to ensure cardholders have access only to authorized areas.

Manage Your System Remotely

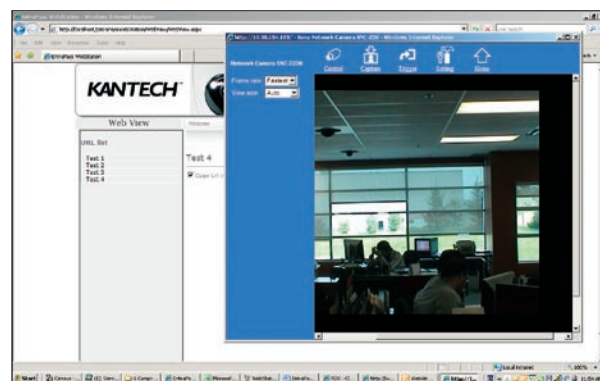
Easily manage your EntraPass system over the web using EntraPass WebStation. The optional web interface provides remote access to create, modify, and delete card records without installing and maintaining additional workstations. In addition, you can assign access levels to cardholders, manually operate doors, relays, and inputs, receive reports securely by email in a variety of file formats, and integrate and display live video from IP cameras, DVRs, etc. using WebViews.

SmartLink for Simple and Advanced System Integration

SmartLink allows you to integrate any third party application or database with EntraPass. SmartLink uses built-in macros to help you design the most commonly requested integrated applications such as CCTV multiplexers, paging systems, HVAC systems, etc., by using an RS-232 or network connection between the system and the third-party device. For advanced system integration, SmartLink enables communication with software applications such as time and attendance, badging, human resource management, student registration, and more through Ethernet, TCP/IP, an RS-232 port, API, or with DLLs. This allows complete and real-time data exchange between systems, eliminating duplicate data entry.

WebViews Provide An Enhanced Operator Experience

Graphical layouts of a variety of items can enhance your EntraPass experience. You can integrate embedded DVRs, IP cameras, web pages, or network files into the desktop. For example, add a IP camera view or a geographical map with objects, such as doors and cameras, directly onto the map for a visual representation of objects in various locations across the world. This gives you the ability to combine multiple technologies into one consolidated view.



The Benefits of Video Integration

Integration with an American Dynamics Intellex digital video management system provides real-time video monitoring as well as video playback of critical access events. Video can be linked to access control events and recorded from different Intellex systems simultaneously. Presets, sequences, dome control, and 1x1, 2x2, 3x3, and 4x4 views are available through the EntraPass software. All cameras can be called up directly from a floor plan simply by double-clicking on the camera or dome icon. Or, choose the American Dynamics EDVR digital video recorder which provides an economical integrated video solution.

take a closer look

EntraPass Video Vault

Installed on your network, the optional EntraPass Video Vault offers an alternative to manually saving each video clip one by one. Simply pre-define groups for your video clips (such as door forced or rejected card) and EntraPass Video Vault saves them to the appropriate group based on whatever schedules you choose.

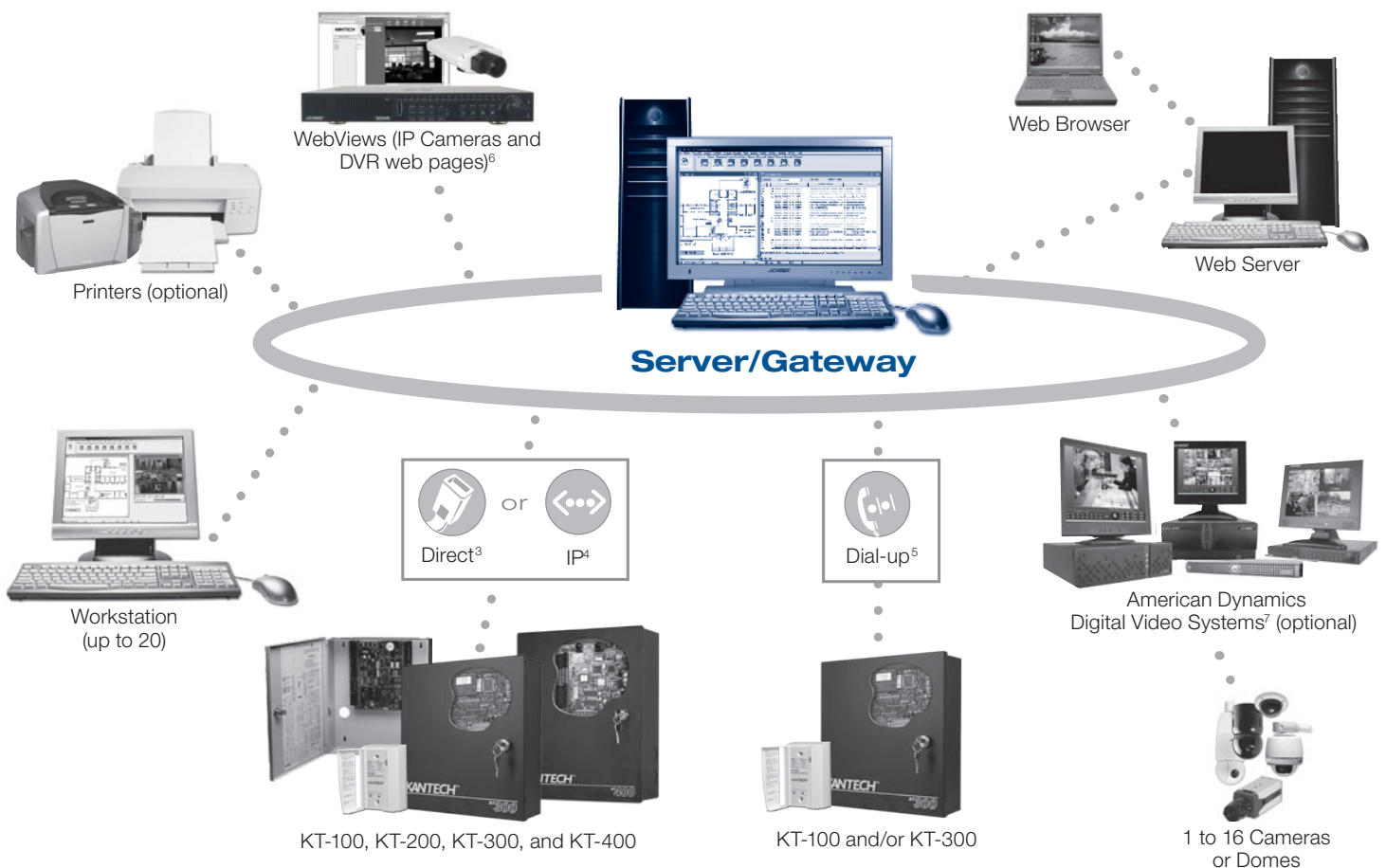
Redundancy Server

EntraPass Corporate Edition offers an optional redundancy server with a mirror database to monitor all data activity on your primary EntraPass server and creates a real-time copy of the system database. In the event of primary server failure, the mirror database automatically launches the redundancy server which supports all the features and functionality of the primary server. Once the primary server returns online, all archives are merged and/or the entire database is copied from the redundancy server.

Managed Access Control

With the addition of EntraPass WebStation and network connectivity using either Kantech IP Link with KT-100 and KT-300, or the KT-400 Ethernet-ready four-door controller, EntraPass provides a high-performing Managed Access Control solution. EntraPass supports the range of advanced solutions including access control, video surveillance, intrusion detection, and security management (guard tours, remote video management, and video/alarm verification).

Basic System Diagram



(3) Direct: using RS-232 or RS-485 with USB-485 or VC-485 converter, KT-100 using RS-485 with converter

(4) IP using Kantech IP Link or KT-400 Ethernet controller

(5) Dial-up: KT-300 only, using RS-232 serial modem at remote site (KT-100 must be connected to KT-300)

(6) A variety of video products have been tested successfully using WebViews. For a complete list, contact Kantech sales

(7) Requires software v3.1 or higher for Intellex Ultra, DVMS, IP, v2.6 or higher for Intellex LT, and v1.54 for EDVR

EntraPass Corporate Edition System Capacities

Cards	Unlimited
Card Families or Site Codes	Unlimited
Door Controllers	17,408 per gateway
Card Readers	34,816 per gateway
Keypads	34,816 per gateway
Monitored Points (Inputs)	278,528 (KT-300)
Auxiliary Outputs for Reader	
LEDs and Door Alarms	69,632 (KT-300)
Elevator Floors per Cab	64
Card User Access Levels	250 per site
Access Level Combinations	Unlimited
Schedules of Four Time Zones Each	100/site
Holidays	366 per system
Operator Workstations	20
Gateways	41
System Operator Passwords	Unlimited
Operator Security Levels	Unlimited, pre-defined (3)
Concurrent Operator Languages	Two
Number of Printers	One per workstation
Serial Port / USB	Max. 32 per gateway
Remote Sites	Max. 512 per gateway

Recommended Computer Requirements for EntraPass Server[®]

Processor	Pentium® IV, 1.8 GHz
RAM	1 GB
Free Hard Disk Space	
Required for Software	20 GB
Screen Resolution	1024 x 768
Graphic Adaptor Card	32 MB
Color Depth	24-bit (16 million colors), required for video integration only
DVD/CD-ROM Drive	48x
Network Interface Card	10/100Base-T
Operating System Compatibility	Windows® 2000, XP Pro, 2003 Standard or Enterprise server, Windows Vista® Business, Enterprise, and Ultimate Editions running in 32-bit mode

Model Numbers

EntraPass Corporate Edition package includes:
License for EntraPass Corporate Edition software enables one server workstation and two additional workstations, plus a Corporate Gateway and CBLK-10 cable kit.

E-COR-EN-V4	EntraPass Corporate Edition v4.01 software - English
E-COR-SP-V4	EntraPass Corporate Edition v4.01 software - Spanish
E-COR-FR-V4	EntraPass Corporate Edition v4.01 software - French

Manuals Only

E-COR-MAN-EN	EntraPass Corporate Edition v4.01 English manual
E-COR-MAN-SP	EntraPass Corporate Edition v4.01 Spanish manual
E-COR-MAN-FR	EntraPass Corporate Edition v4.01 French manual
E-COR-UPG-EN-V4	Upgrade for EntraPass Corporate Edition v3.x to v4.01 with English manual
E-COR-UPG-FR-V4	Upgrade for EntraPass Corporate Edition v3.x to v4.01 with French manual

Accessories

E-COR-WEB-1	One concurrent EntraPass Webstation connection license for EntraPass Corporate Edition v4.01
E-COR-WEB-3	Three concurrent EntraPass WebStation connection licenses for EntraPass Corporate Edition v4.01
E-COR-WS1	One additional workstation license for EntraPass Corporate Edition v3.0 and higher
E-COR-WS6	Six additional workstation licenses for EntraPass Corporate Edition v3.0 and higher
E-COR-COM	Forty additional Corporate Gateway licenses for EntraPass Corporate Edition v3.0 and higher
E-COR-VVM	Video Vault license for EntraPass Corporate Edition v3.0 and higher
E-COR-RDN	Redundancy server license for EntraPass Corporate Edition v3.0 and higher
E-COR-SQL	Card Gateway license for EntraPass Corporate Edition v3.0 and higher
E-COR-MAC	Account Management (Managed Access Control) license for EntraPass Corporate Edition
E-COR-KTK-1	One Kantech token for EntraPass Corporate Edition
E-COR-KTK-2	Two Kantech tokens for EntraPass Corporate Edition
E-COR-KTK-3	Three Kantech tokens for EntraPass Corporate Edition
E-COR-KTK-5	Five Kantech tokens for EntraPass Corporate Edition

(8) Actual requirements may vary based on your operating system and configuration. For Vista operating system or video integration, a dual-core processor and 2 GB RAM is highly recommended.

Product offerings and specifications are subject to change without notice. Actual products may vary from photos. Not all products include all features. Availability varies by region; contact your sales representative. Certain product names mentioned herein may be trade names and/or registered trademarks of other companies.

© 2008 Tyco International Ltd. and its respective companies. All rights reserved. KT0098-DS-200810-R03-LT-EN